



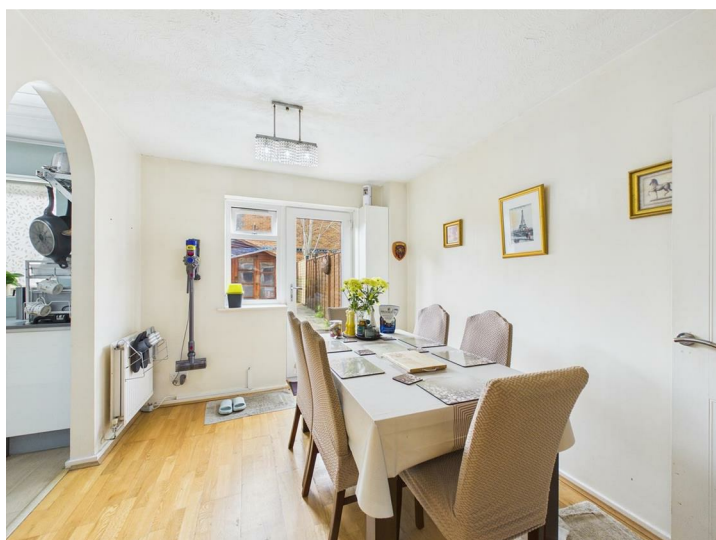
Stamp your mark on this three-bedroom end-terrace home located in the popular Willowbank area at the southern end of Cepen Park North.

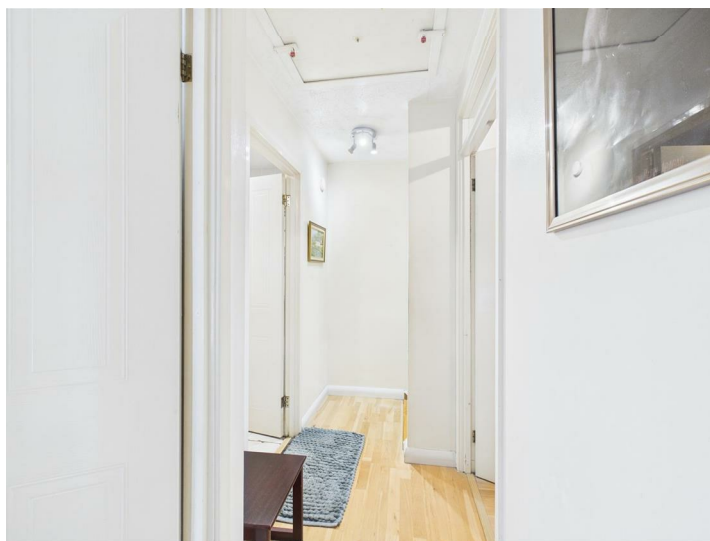
The ground floor accommodation comprises an entrance hall, sitting room, dining room, and kitchen. On the first floor there is a landing, a primary bedroom with en-suite shower room, two further bedrooms, and a family bathroom.

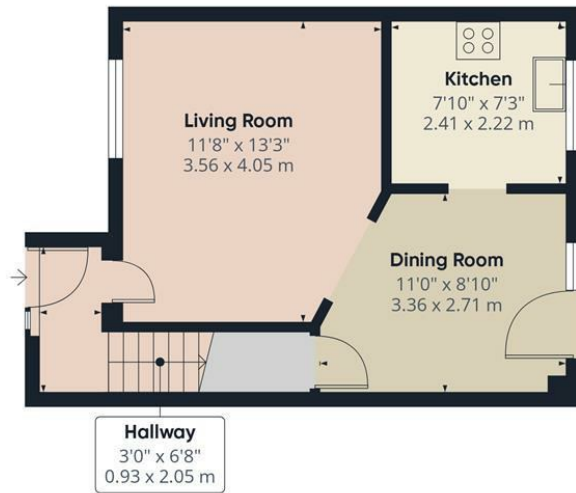
Externally, the property occupies a corner plot with an open garden to the front and an enclosed rear garden. There is also an allocated parking space located to the rear of the property.

The property is offered with an onward chain in place.

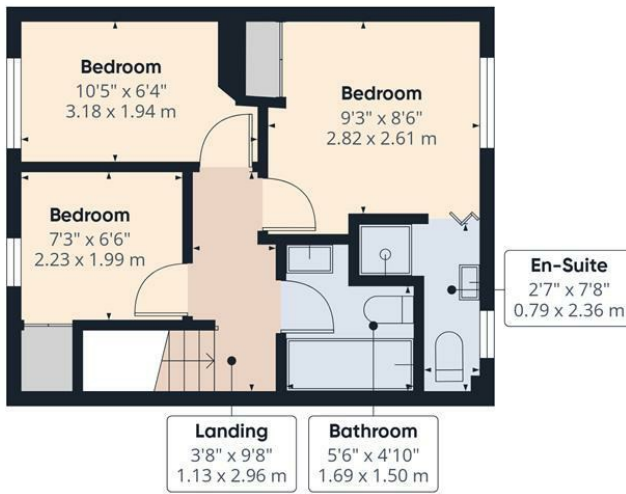
- Three Bedroom End Terrace Home
- Allocated Parking Space
- Sitting room & Dining Room
- Enclosed Rear Garden with Rear Access Gate
- Close to Shops Schools & Commuter Links
- Onward Chain in Place
- Entrance Hall
- Fitted Kitchen
- Popular Cepen Park North Location
- Master Bedroom with En-Suite Shower Room







Ground Floor



First Floor



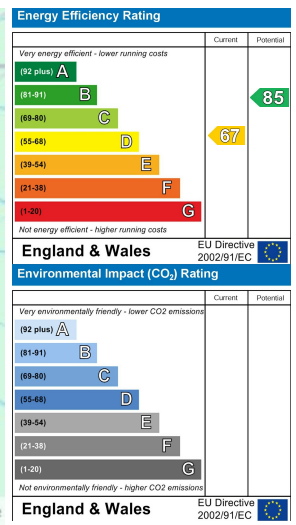
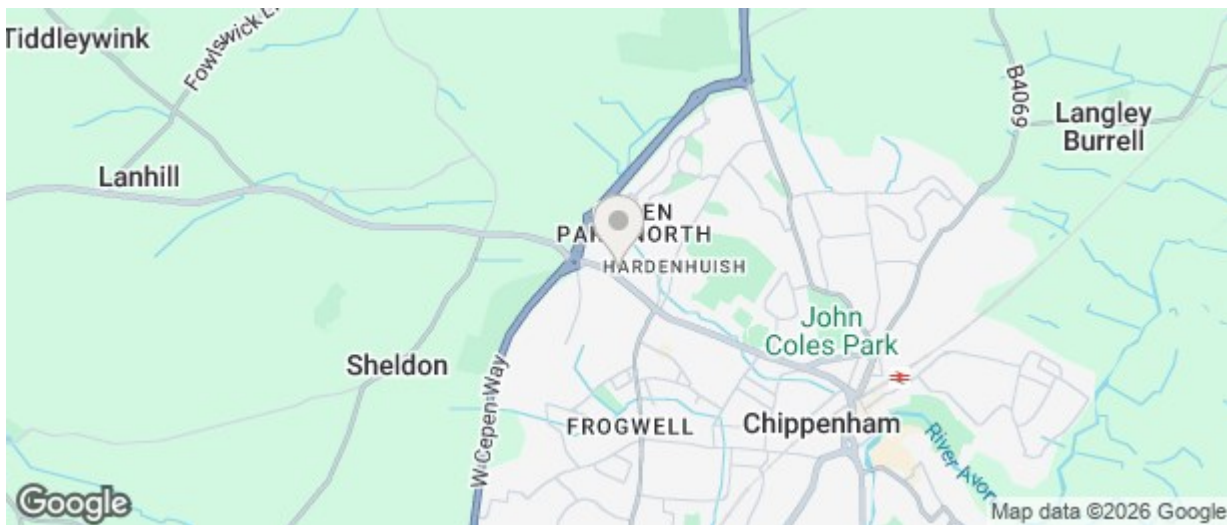
Approximate total area⁽¹⁾

630 ft²
58.7 m²

(1) Excluding balconies and terraces

Calculations reference the RICS IPMS 3C standard. Measurements are approximate and not to scale. This floor plan is intended for illustration only.

GIRAFFE360



The particulars are set out as a general outline only for the guidance of intended purchasers or lessees, and do not constitute, any part of a contract. Nothing in these particulars shall be deemed to be a statement that the property is in good structural condition or otherwise nor that any of the services, appliances, equipment or facilities are in good working order. Purchasers should satisfy themselves of this prior to purchasing